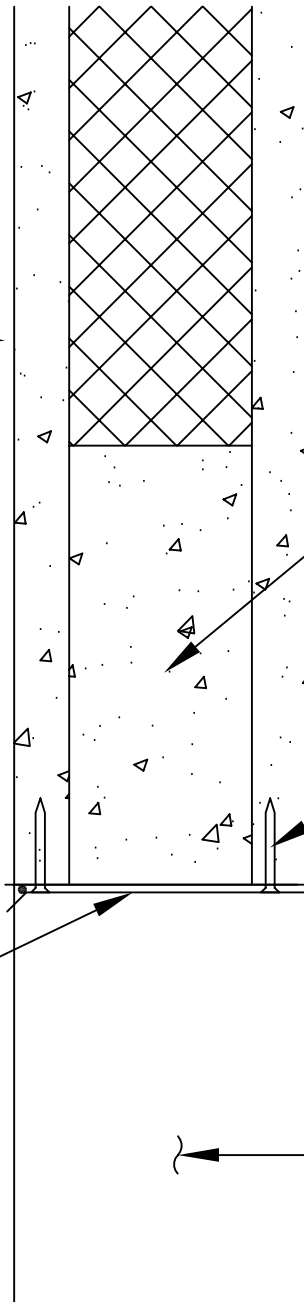


# OVERHEAD DOOR HEADER FINISHED W/BENT PLATE

VERSACORE  
WALL PANEL  
BY FABCON



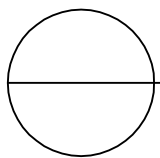
CORE FILLED SOLID  
W/ CONC IN PLANT

COUNTERSUNK  
TAPCON FASTENER  
IN STRUCTURAL  
SECTION

22 GA BENT  
METAL PL (OR  
SIZED AS REQ'D) W/  
CONTINUOUS  
WATER TIGHT  
SEALANT BY G.C.



WALL PANEL  
BEYOND



DETAIL

$1 \frac{1}{2}'' = 1'-0''$