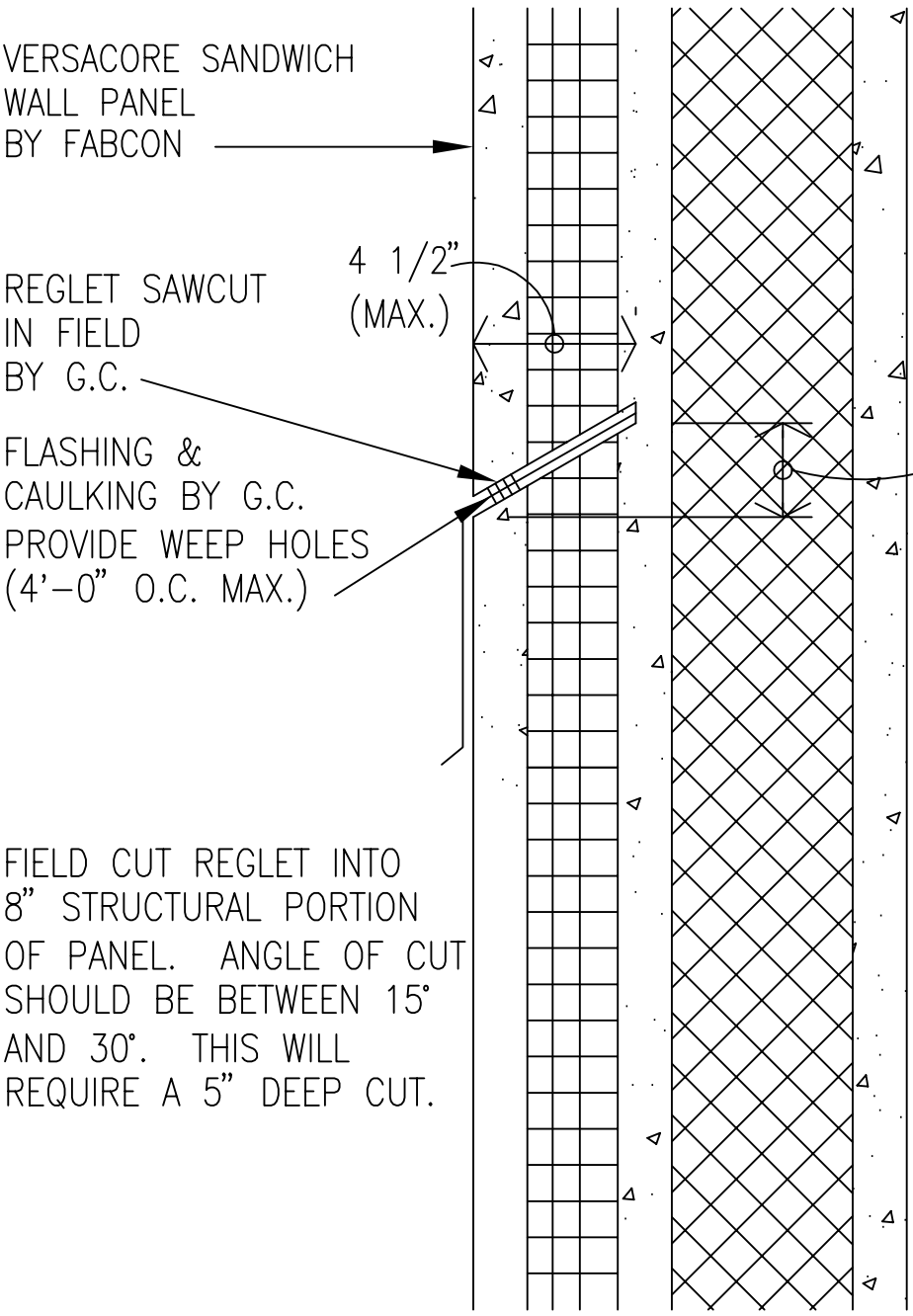


REGLET SAWCUT DETAIL



THIS MAY VARY BETWEEN 1 1/4" AND 2 1/2"

NOTE:
THIS DETAIL SHOULD BE USED AT ALL HIGH/LOW ROOF CONDITIONS WHICH OCCUR AT SANDWICH WALL PANELS

PRODUCTION NOTE:
PROVIDE 3 EXTRA ROWS OF PANEL TIES: 1'-0" & 2'-0" ABOVE SAWCUT AND 1'-0" BELOW SAWCUT.

○ RECOMMENDED REGLET DETAIL
1-1/2" = 1'-0"